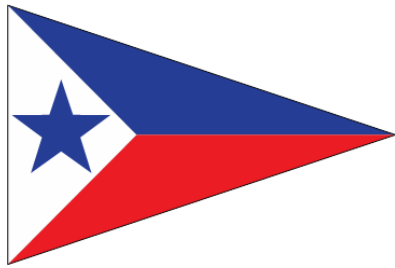


# POCO LOCO BAY RACE

**Saturday, September 24, 2016**

**Hosted By:**



Richmond County Yacht Club  
142 Mansion Avenue  
Staten Island, New York 10308  
718-356-4120  
[www.rcyachtclub.org](http://www.rcyachtclub.org)

## **Notice of Race**

Cherished friend and RCYC member Richard O'Connell passed away on March 3, 2001 at age 45 from complications of juvenile diabetes. He had contended with this debilitating disease since the age of five. The proceeds of this event will be donated in his memory to the Staten Island Chapter of the Juvenile Diabetes Foundation.

Richie was loved by many and was a unique person with many talents. He was an excellent sailor who always had time to teach another who wanted to learn. Perhaps his greatest gifts were his spirit for life and his sense of humor. Above all, he never allowed his disease to become an obstacle for living life abundantly. He always found a way to look forward, and taught us all perspective.

The New York Bay Race, Richie's favorite race at RCYC, has been re-named the Poco Loco Bay Race in his honor. The Poco Loco Bay Race will be held on Saturday September 24th, 2016. We will be joining local sailors as we hoist our sails in the Raritan Bay for a great cause.

Please join us in supporting the Juvenile Diabetes Research Foundation so we can help others with a similar spirit.

# POCO LOCO BAY RACE – Notice of Race

## 1 Rules

- 1.1 The Regatta will be governed by the 2013-2016 Racing Rules of Sailing and the POCO LOCO BAY RACE Sailing Instructions.

## 2 Eligibility and Entry

### 2.1 Eligibility

The regatta is open to all PHRF-MA members for the Spinnaker and Non-Spinnaker Divisions, NEMA members for the Multihull Division, and open to all boats for the cruising division.

All PHRF-MA members must submit a current PHRF rating certificate when checking in or by emailing a digital copy to the Regatta Committee at Richmond County Yacht Club

### 2.2 Entry

Eligible boats may enter by completing the on-line entry process on the Yacht Scoring website ( [www.yachtscoring.com](http://www.yachtscoring.com) ) and paying the entry fee by September 24, 2016.

Direct link: [www.yachtscoring.com/emenu.cfm?eID=2911](http://www.yachtscoring.com/emenu.cfm?eID=2911)

## 3 Classes

There will be a Spinnaker Division (A), a Non-Spinnaker Division (B), a Multihull division (M), and Cruising Division (C). Sub-Divisions will be created based on the number of applicants in the divisions.

## 4 Fees

The entry fee is for PHRF and Multihull classes is \$100. The entry fee includes two tickets to the post-Race Awards dinner and party. Additional tickets will be available on the Yacht Scoring website or from the regatta committee at check-in.

## 5 Qualifying Series – not applicable

## 6 Schedule

Saturday, September 24th, 2016	
Check-in	0900
Skippers Meeting	1000
Harbor Start	1100
First Gun	1200
Post-Race Party	1900

## 7 Measurements

The Assigned Rating will be determined as follows:

# POCO LOCO BAY RACE – Notice of Race

7.1 For boats with a valid PHRF-MA or NEMA certificate the Assigned Rating will be the certified rating.

7.2 For boats in the cruising division without a valid PHRF-MA or NEMA certificate, the Assigned Rating will be determined by the regatta committee.

The committee will review certificates received previously by the boat as well as published standard ratings.

## 8 Sailing Instructions

The Sailing Instructions will be available at the Skippers' Meeting the morning of the regatta at Richmond County Yacht Club and on the web at

<http://rcyachtclub.org/pocobayrace.htm> or at [www.yachtscoring.com/emenu.cfm?eID=2911](http://www.yachtscoring.com/emenu.cfm?eID=2911)

## 9 Venue

Richmond County Yacht Club, Raritan Bay, Lower New York Bay

## 10 Course

### Division A (Spinnaker) and Division M (Multihull):

Start: Vicinity of Old Orchard Shoal Lighthouse Island

First Mark: West Bank Lighthouse (To Port)

Second Mark: R"2"QR (To Port)

Third Mark: West Bank Lighthouse (To Starboard)

Finish: Vicinity of Old Orchard Lighthouse

Approximate Length: 16.04 nm

### 11 Division B and Division C (Working Sails Only):

Start: Vicinity of Old Orchard Shoal Lighthouse Island

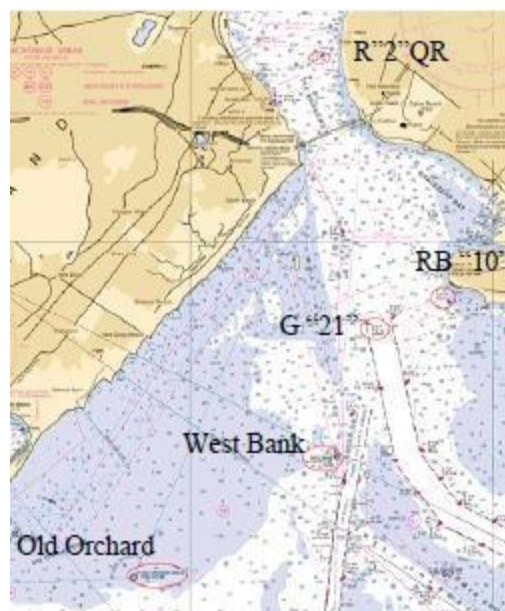
First Mark: West Bank Lighthouse (To Port) Second Mark: RB"10" Norton Point (To Port)

Third Mark: G "21" Ambrose Channel (to Port)

Fourth Mark: West Bank Lighthouse (To Starboard)

Finish: Vicinity of Old Orchard Lighthouse

Approximate Length: 11.12 nm



# POCO LOCO BAY RACE – Notice of Race

## 12 Penalty System

For all classes rule 44.1 is in effect

## 13 Scoring

The Low Point Scoring system of Appendix A4 of the 2013-2016 Racing Rules of Sailing will apply.

## 14 Support Boats, 15-Berthing, 16-Haul-Out Restrictions, and 17-Diving Equipment and Plastic Pools - not applicable.

## 18 Radio Communications

Except in an emergency, a boat shall neither make radio transmissions while racing nor receive radio communications not available to all boats. The Race Committee will announce course changes on Channel 71. Boats are encouraged to monitor Channel 71 during the race and should advise the Race Committee on that channel if they drop out.

## 19 Prizes

Overall Prizes will be awarded for First, Second and Third Places in each sub-division.

## 20 Disclaimer of Liability

Competitors participate in the regatta entirely at their own risk. See rule 4, Decision to Race. Richmond County Yacht Club will not accept any liability for material damage or personal injury or death sustained in conjunction with or prior to, during, or after the regatta.

## 21 Insurance

Each participating boat shall be insured with valid third-party liability insurance. It is the owner's or owner's representative's sole and inescapable responsibility to ensure that the insurance is current and adequate before participating in this regatta.

## 22 Further Information

A post-race party and awards presentation will follow the race including:

- Awards
- Barbecue
- Beverages

Party Only Cost \$20 Total Per Head. Entrance Fee includes 2 Party Tickets.

## 23 Contacts for the Poco Loco Regatta Carlos Font : cfont67@gmail.com

## **POCO LOCO BAY RACE – Notice of Race**

Additional Tax Deductible Contributions to the Juvenile Diabetes Research Foundation will be accepted cheerfully.

Please make out a separate check payable directly to JDRF(Juvenile Diabetes Research Foundation) for donations.

For more information about the foundation, please visit: <http://www.jdrf.org>